

Service Excellence  
Support Families  
Lab Technology  
Safety Pharmacy Mind & Body  
Community Referral Sources  
**Dedicated**  
Patients Staff Innovation  
Telehealth Growth  
Recovery Wellness  
Teamwork Integrity

## 2021 Dedicated

Dear Signature Health Community:

Imagine being in an airplane at night and looking out the window to see a single streetlight. You're 30,000 feet in the air, but you can still see that one light, because it pierces the darkness. As the plane keeps flying, you see bigger towns, bigger cities. The light grows brighter. Each of us has a light, and when we can bring our lights closer together, the world becomes brighter. And if we can continue to gather together, brighter and brighter, eventually the darkness disappears.

These past two years of the pandemic have tested the limits of our strength. Our industry, our entire world, has been hit in ways we never could have imagined and that we were not prepared for. Yet each team member here at Signature Health, alongside many others, day after day, has found the strength to move forward. I believe we've found that strength through unwavering dedication. Dedication to our mission. Dedication to our patients. Dedication to each other.

What stands out most about 2021 is how Signature Health successfully toggled between reacting to pandemic-related curve balls, and proactively pushing forward on initiatives to benefit our patients and staff.

On one hand, we overcame many obstacles to offer COVID-19 vaccinations to thousands of our patients, community members and staff, during the time of greatest demand and shortest supply. The variant surges strained our staff even further, but also meant people needed more access to testing and masks. So we jumped into action, all while keeping patients safe when receiving care in our offices (see page 7).

Simultaneously, we made great progress adopting new, transformational technology. Launching Epic, the gold standard electronic health record (EHR), across our behavioral health and medical services meant the clinical backbone of our organization changed for the better. This initiative reached every corner of our organization, and staff suited up admirably for the challenge because they understand how the system positively impacts quality, communication, and integrated care for our patients (see page 6).

Our site and service line teams expanded their capabilities to meet our patients' needs, with new programs, efficiencies, and competencies (see pages 8-11). There is much to be excited about as we plan to open new and transformed spaces in Lake, Cuyahoga and Ashtabula counties (see page 12).

Our successes required sacrifice and teamwork. Some days, it was difficult to hold on to the thread of our mission, but our dedication and our strength pushed us forward. This is the work we've dedicated our lives to.

We know now that the world won't completely return to the way it was, but remaining grounded in our dedication and mission gives me boundless hope for our future.



**Jonathan Lee**  
President & CEO

### Our Mission Statement:

**Signature Health puts good health within reach of all of our community members through comprehensive mental health, medical and support services essential for optimizing the well-being of mind and body.**

**"We knew we couldn't let our patients down, so we suited up and reminded ourselves: this is why we're here."**

# 2021 Dedication by the Numbers

## Our People



● Counselors & Behavioral Health Program Staff	<b>29%</b>
● Nursing, Other Clinical & Medical Program Staff	<b>17%</b>
● Case Managers & Peer Support	<b>15%</b>
● Administration & Support	<b>13%</b>
● Patient Access & Patient Services	<b>11%</b>
● Medical Prescribers*	<b>8%</b>
● Pharmacy	<b>6%</b>

\* Physicians, nurse practitioners, and physician assistants across psychiatry, addiction medicine, primary care, infectious disease, and sexual and reproductive health

## Our Quality

Signature Health exceeded the national Unified Data System (UDS) average on several quality measures including:

- ✓ Early entry into prenatal care
- ✓ Child weight assessment and counseling
- ✓ Controlling high blood pressure
- ✓ Statin therapy
- ✓ Diabetes hemoglobin A1C control
- ✓ Tobacco use screening and intervention
- ✓ HIV screening
- ✓ Linkage to HIV care (100%)
- ✓ Depression screening and follow up
- ✓ Depression remission at 12 months

**1,100**

peer reviews completed across our service lines



9 out of 10 patients would recommend Signature Health to others

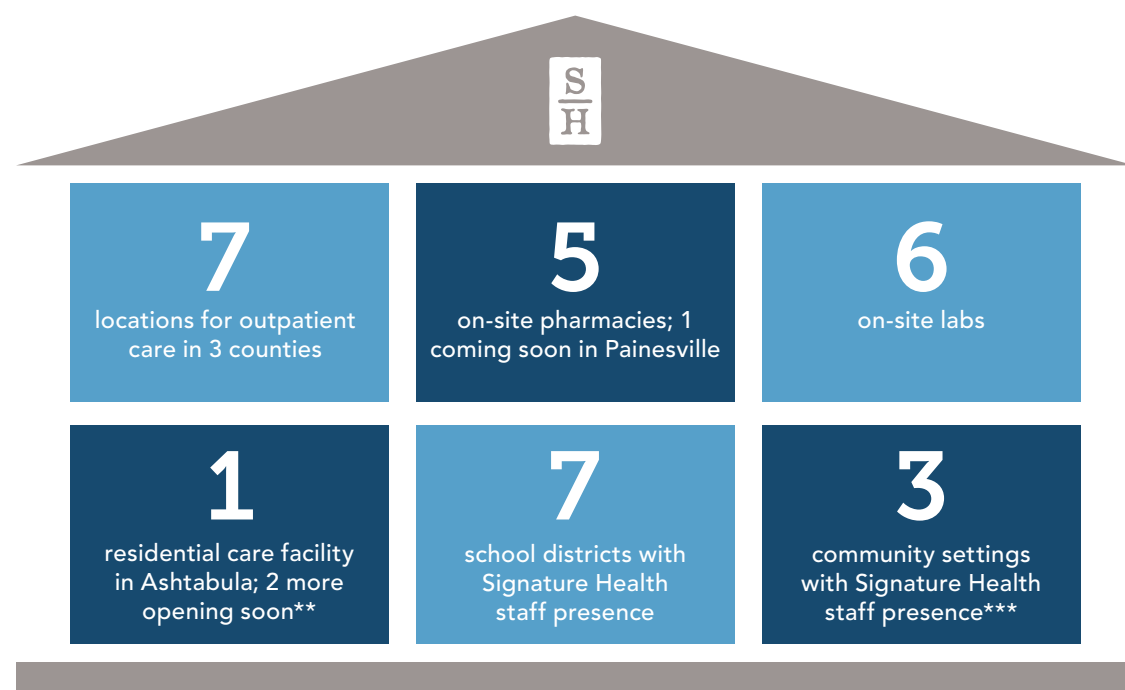
## Our Impact

Nearly  
**31,000**  
Total Patients Served

From newborns to seniors, our patients reflect our vibrant community of many races, ethnicities, sexual orientations, and gender identities.

14% were under age 18 | 7% were over age 65

## Our Presence



\*\* Mentor and Cleveland

\*\*\* Conneaut Human Resources Center, Wickliffe Family Resource Center, Northridge Commons in Cleveland

	<b>Behavioral Health</b>	<b>28.3K</b> Patients served
	<b>Primary Care</b>	<b>6.4K</b> Patients served
	<b>Addiction Recovery</b>	<b>1.26K</b> Patients treated through Medication-Assisted Treatment (MAT)
	<b>Sexual &amp; Reproductive Health</b>	<b>2K</b> Patients served
		<b>16.8K</b> People reached through 650 education sessions and 15 events
	<b>Pharmacy</b>	<b>247.3K</b> Prescriptions filled

	<b>Infectious Disease</b>	<b>816</b> Patients served
		<b>733</b> Free screenings for HIV, Hep C and STIs
		<b>129</b> Patients supported through the Ryan White Program
	<b>Lab</b>	<b>29.7K</b> Specimens processed
	<b>Transportation</b>	<b>39.8K</b> Rides coordinated for patients
	<b>Patient Access</b>	<b>284K</b> Calls answered (with a decrease in average wait time of 73%)

# Dedicated to Improving Patient Care

Signature Health invested heavily in 2021 to bring new technology and infrastructure into the patient and colleague experiences.

## AN 'EPIC' MILESTONE

Epic is known in the health care industry as the gold standard of electronic health records (EHRs), relied on by some of the largest and most respected health care systems in the nation—including right here in Northeast Ohio.

After months of intense planning, teamwork, and training, Epic's power became a reality for our care providers in May 2021. The platform allows us to more easily connect and communicate about patient care—not only within our organization—but also with outside providers who play a role in that patient's well-being.



Staff celebrated the launch of Epic with a dress rehearsal on May 24, 2021.

Our clinicians are empowered by the new tools and resources available through Epic to help them make safe, high-quality care decisions for patients. The launch of this new, single EHR at Signature Health has tremendous benefits for our patients' integrated care, and we are committed to continuous optimization and improvement for years to come.

# Dedicated to Meeting Public Health Needs

As a Federally Qualified Health Center (FQHC), Signature Health played a unique access role in year two of the COVID-19 pandemic.

## VACCINE VICTORIES

It is hard to believe there was a time when access to a COVID-19 vaccine was extremely limited, as was the case in early 2021. That's when Signature Health sprang into action as an early recipient of Moderna shots, setting up vaccination clinics in a matter of days to serve our patients, staff, and community members.

Over the course of five months, we gave thousands of vaccinations at dozens of clinics, held in a variety of settings—at our offices, at local churches, and in schools.

Fast forward to early 2022 and we are proud that approximately 95% of Signature Health colleagues are vaccinated against the coronavirus.

## TESTING TRIUMPHS

While access to reliable COVID-19 testing has been essential throughout the pandemic, there have been ebbs and flows with testing demand as a result of the Delta and Omicron variant waves. Through our primary care teams, Signature Health has maintained in-office COVID-19 testing and consulted with patients who have symptoms, exposure, or other concerns.

Through a program with the Ohio Department of Health to make at-home COVID-19 test kits more accessible, Signature Health pharmacies distributed 3,750 kits over three months.

## SAFETY SUCCESSES

Despite a majority of appointments happening through telehealth, Signature Health did welcome more patients and staff back into our offices in 2021. With that came a watchful eye to ensure our safety practices met standards set by public health experts.

## BRINGING MYCHART TO PATIENTS

With Epic comes MyChart, which some patients already know from using it with other health care providers. This tool makes health information accessible online, 24/7, allowing the patient to see test results, upcoming appointments, and prescriptions. Our primary care and infectious disease patients have the ability to message their provider through MyChart—a feature also coming to behavioral health patients in the future.



## MEDICATIONS MADE EASY

Signature Health pharmacies strive to make it easy for patients to access and manage their prescriptions. We do this by offering pick up, mailing, and same-day or next-day delivery options, and also by including the pharmacist in the patient's care team. When the provider and the pharmacist are on the same team and can easily communicate, it means the patient doesn't have to play the middle man.

Our pharmacy infrastructure expanded in 2021, with the launch of a new patient access team of pharmacy technicians. This team provides timely service for people calling with questions or refill needs, granting our pharmacists more time to consult with patients on medication management.



Our growing Pharmacy Patient Access Team assisted with nearly 7,500 patient calls in 2021, and will serve more sites in 2022.

Through a screening process during check-in, our patient services team could identify if someone should enter into a rapid rooming protocol, to be safely examined and tested for COVID-19 by a primary care provider. Each location also chooses a COVID-19 site safety coordinator to support cleaning, physical distancing, and masking strategies.



Telehealth continues to be critical. In 2021, 60% of patient visits happened through telehealth.

## MASK MOMENTS

Most recently, Signature Health is participating in the HRSA Health Center COVID-19 N95 Mask Program, an effort to ensure underserved communities and those disproportionately affected by COVID-19 have equitable access to public health tools needed to prevent the spread of COVID-19.

N95 masks offer additional protection, and Signature Health has distributed thousands to patients, community members, and community partners to expand our reach.



Preparing vaccine doses for members of a local church.

# Dedicated to Caring for Behavioral Health Patients with Skill and Compassion

These highlights focus on meeting the needs of our behavioral health patients—from children to seniors. Through counseling and group therapy, case management, peer support, and medical care, we are committed to helping individuals meet their goals through patient-centered treatment plans.

## BOOSTING CARE COORDINATION

For any new patient seeking help for a mental health or substance use concern, completing an assessment with a counselor is the first step. The length of these assessments increased from 60 to 90 minutes, allowing more time for care coordination. This change benefits our patients because they can have future appointments and health screenings scheduled at that time. The counselor also can more easily connect patients with wrap-around services to address barriers to care or social determinants of health.

## COMMITTING TO ZERO SUICIDE

We have made the commitment to adopt Zero Suicide, an internationally recognized, evidence-based approach to suicide care. It presents a practical framework for system-wide transformation to save lives, because one suicide is one too many. This happens through training, culture shift, and clearer pathways for identifying and treating patients at risk of dying by suicide.



Necessity Nooks in Ashtabula and Painesville offer hygiene items to patients and community members in need.

## ASHTABULA OFFICE

- Staff laid groundwork to expand crisis services to include a mobile team that is now able to support first responders in the field during situations involving individuals with urgent mental health or substance use needs.
- Ashtabula County jail-based services expanded to include more Signature Health staff, including a full-time case manager and a medical prescriber who makes frequent visits. Also in the works is a Thinking for a Change group for inmates, led by therapists.
- The Child Advocacy Center served 120 families, providing child victims of sexual and physical abuse and their loved ones with a safe and caring environment for the disclosure and treatment of their traumatic experiences.

## BEACHWOOD OFFICE

- Staff have expertise caring for women who are: experiencing mood changes related to their menstrual cycle; pregnant or considering pregnancy while also managing a mental health diagnosis; coping with prenatal or postpartum depression; coping with infertility or pregnancy loss; or experiencing emotional distress due to menopause.
- The site began offering a Relationship Group and services for adults with developmental disabilities who have shown problematic sexual behavior.
- Beachwood's group therapy options are expanding to include new sessions focused on grief, women's needs, trauma, and substance use aftercare.



Raising awareness about mental health at the Lake County NAMI Walk.

## LAKESIDE OFFICE

- The team grew by 13 staff—including more diagnostic counselors to assess new patients—and their space expanded to additional floors.
- Several case managers grew professionally, completing counseling internships. Monthly motivational interview trainings also allowed counselors and case managers to become more proficient in this area.
- Collaborations with forensic partners grew—including with the Cuyahoga County High-Risk Domestic Violence Court and the Mental Health and Developmental Disabilities (MHDD) Court.

## MAPLE HEIGHTS OFFICE

- Facilitators added new groups including: Dialectical Behavior Therapy (DBT) for Teens, Anger Management for Men & Women, Living Well, Men's Stress Management, and Grief and Loss.
- Several counselors took advantage of grant funding to receive training related to Gambling Addiction and Recovery, including a supervisor participating in a fellowship.
- An expanded partnership with the Greater Cleveland Food Bank offers prepackaged lunches to patients with limited food available at home.

## PAINESVILLE OFFICE

- Behavioral health services continue to expand, including a growing group of case managers and the addition of walk-in case management.
- Counselors added new competencies in couples therapy and Eye Movement Desensitization and Reprocessing (EMDR) treatment, which can help with post-traumatic stress disorder (PTSD) and other conditions.
- Anger Management groups serve court-ordered individuals from across Lake County.

## WILLOUGHBY OFFICE

- Two new case management-based groups focus on building adult social skills and women's support and coping.
- The Partial Hospitalization Program (PHP) model evolved into a more patient-led approach, including dedicated days for group member presentations and activities, balanced with clinical-led discussions.
- Several counselors added additional certifications including trauma-based yoga instruction, and Sensorimotor Psychotherapy™, which is a body-centered approach to treating symptoms of unresolved trauma; only a few people in Ohio practice this.



Willoughby's lovely garden offers tasty produce for patients to take home.

# Dedicated to Treating Medical Patients with Urgency and Empathy

Signature Health's more than 60 prescribing physicians, nurse practitioners, and physician assistants have expertise in: child and adult psychiatry, addiction medicine, infectious disease, family or internal medicine (i.e., primary care), pediatrics, and sexual and reproductive health.

## PSYCHIATRY

**Creating Access:** The Psychiatry Access program is a collaboration between the Intake and Psychiatry teams to quickly refer new patients for necessary evaluation and treatment. This pathway means a patient with urgent needs may be seen by a psychiatry provider as quickly as on the same day, or up to a few days after their mental health assessment.

**Nurturing Talent:** As an extension of our ongoing efforts to develop clinical training opportunities for students and employees, we noticed that while new doctors undergo residency training after completing medical school to help them transition into their roles, similar career-building post-graduate opportunities for new nurse practitioners (NPs) are rare. To meet this need, in 2021 we welcomed four residents to the inaugural class of our Psychiatric Nurse Practitioner Residency Program. The residents were selected through a competitive application process, and have been provided dedicated mentorship, workshops and clinical education for one year, as they transition to their roles as NPs at Signature Health.



Debating a mobile clinic in 2022 will help to expand access to life-saving naloxone.

## ADDICTION MEDICINE

**Preventing Opioid Overdoses:** To improve access to life-saving medications for substance use disorder, we launched a new program so patients can get help as quickly as possible. The Medication-Assisted Treatment (MAT) Access Clinic offers same-day or next-day appointments following an initial assessment, where the care team can induce addiction medication rapidly to those who need it. Patients are then transferred to their ongoing provider and participate in counseling.

**Increasing Access to Naloxone:** Getting naloxone into the hands of our patients and community members is a priority, so that individuals are equipped to save a life during an emergency opioid overdose situation. In 2021, Signature Health:

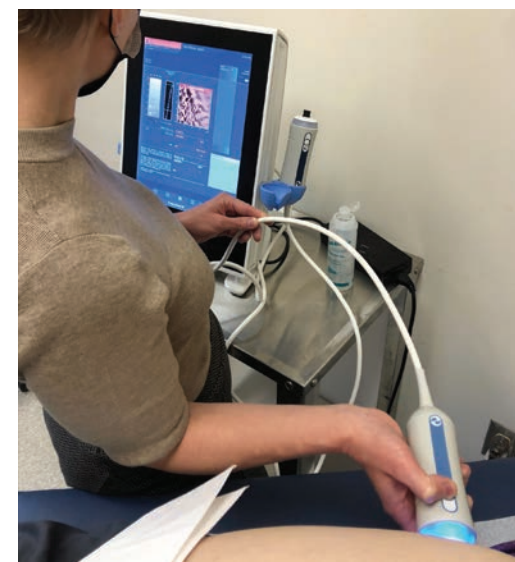
- Offered free naloxone training events and kits
- Ensured our MAT participants are given naloxone as part of their orientation
- Made naloxone available through our pharmacies
- Supported the NALOXBOX community program in Lake (and soon) Ashtabula counties
- Planned for the launch of a new mobile clinic in 2022 that brings naloxone and health screenings to communities in need

## INFECTIOUS DISEASE

**New Walk-in Testing Capabilities:** Our prevention team added to the free, walk-in, confidential screenings it provides to patients and community members. Rapid HIV and hepatitis C testing is available at six sites, and our Lakewood and Willoughby locations also now offer walk-in testing for these sexually transmitted infections: gonorrhea, chlamydia, syphilis, and trichomoniasis. See the schedule at [SignatureFreeTest.org](https://SignatureFreeTest.org).

Anyone who tests positive is connected to treatment at Signature Health, or their provider of choice. Anyone who tests negative receives prevention education, including access to pre-exposure prophylaxis (PrEP) and post-exposure prophylaxis (PEP) for HIV prevention.

**Normalizing Hep C & HIV Screenings:** A pilot to standardize hepatitis C and HIV screenings for new substance use disorder patients in our MAT program yielded eye-opening results, as well as learnings and best practices that have been shared at national conferences. This successful collaboration between our Infectious Disease and MAT teams led to agency-wide adoption of these screenings for all new behavioral health patients.



A FibroScan test helps assess the health of the liver when a patient has hepatitis C.

## PRIMARY CARE

**Caring for All Ages:** Our growing team of primary care practitioners cares for family members of all ages, so patients from newborns to seniors can be seen in our Ashtabula, Beachwood, Maple Heights, Painesville, and Willoughby locations.

**Integrating with Behavioral Health:** Patients have the option to expand their care team beyond a primary care provider and nurse. They can choose to get extra support from a Behavioral Health Consultant—a licensed counselor or social worker who works in conjunction with the medical provider to help the patient make positive behavior and lifestyle changes.



We work to connect community members with needed care and health education.

## SEXUAL AND REPRODUCTIVE HEALTH

**Creating Access:** Offered more than 100 hours of walk-in Teen Clinics in Painesville and Ashtabula for individuals seeking education, STI screenings, birth control methods, and pregnancy testing/counseling.

**Community Education:** Continued an educational focus on healthy relationships, violence/rape prevention, STI prevention, contraception options, and safer sex practices.

**Integrating Care:** Patient Services Representatives in the Painesville office were cross-trained to serve patients across behavioral health, primary care, and sexual and reproductive health.

# Looking Ahead

Several facility openings and expansions over the next two years will help to improve the health of the communities we serve.

## A NEW HOME IN PAINESVILLE & LAUNCHING DENTAL CARE

In May 2022, Signature Health’s Painesville office is relocating to a fully renovated, more accessible, larger facility on South State Street. Complementing our behavioral health and medical services for all ages, the new space will offer an on-site pharmacy and lab. We are also working to bring dental care to our Painesville patients.



The new Painesville office will open in May 2022.

## EXPANSIONS IN ASHTABULA AND LAKEWOOD

The growth of our Lakewood office demands more space for new staff and patients. Construction began in early 2022 to build out an additional 10,600 square feet, with plans also to renovate our 14,400 square feet of existing space.

The Ashtabula office will expand into the 5th and 6th floors of the “old hotel,” where Signature Health has served patients since 2014. This additional 12,000 square feet will focus on child and family counseling and primary care services. The first floor will evolve into larger pharmacy and lab spaces, while preserving historic elements such as the marble staircase and arched lobby windows.

## A NEW VISION FOR WILLOUGHBY

Also on the horizon is moving our Willoughby office into a new, bigger space. Design plans are in motion to build—from the ground up—a new outpatient care facility near the current office on Mentor Avenue.

## OPENING RESIDENTIAL CARE FACILITIES

In 2022, Signature Health will open a new, 16-bed men’s residential treatment facility in Mentor for substance use disorder (SUD), including opioid use. The Everett Clinic will focus on counseling, medication-assisted treatment (MAT), and intensive group therapy, while offering a home-like environment. By 2023, we plan to add specialized care services for endocarditis, a life-threatening inflammation of the inner lining of the heart’s chambers and valves that is sometimes caused by IV drug use.

ORCA House has a long history in Cleveland of providing recovery services to both men and women. It has been closed for the past two years due to COVID-19 but will be relocating and reopening with 36 beds at a newly-constructed site on Prospect Avenue. Group and individual treatment will focus on patients who have a dual mental health and SUD diagnosis.



An Everett Clinic exam room, where men with SUD will receive high-quality care.

# Dedicated Staff: 2021 Service Awards

In 2021, these dedicated colleagues celebrated milestones. Thank you for serving our community with skill and compassion!

**35**  
YEARS

Mary Wynne-Peaspanen

**15**  
YEARS

Alice F. Griffith  
Margaret A. Senskey

**10**  
YEARS

Courtney D. Banghart  
Shanay Dixon  
Lisa Hayes  
Mary T. Hoff  
Sarah A. Mealy  
Alisa Nieves  
Ruth Prucey  
Michelle L. Sidley

**5**  
YEARS

Brenda L. Berry  
Megan R. Bosland  
Laura L. Burns  
Tatyana M. Colbert  
Nicole R. Dickard  
Daniel Eathridge  
Jamie L. Ferrick  
Sara A. Hayek  
Aliyah Hines  
Lalescia Hurt  
Michelle A. Imbrogno  
Maureen D. Jacobson  
LaTricia S. Pillar  
Jeanne Redrick  
John S. Rose  
Jon C. Saari  
Lynnette Shaffer  
Alycia Smith  
Jennifer L. Spring



Two longtime Ashtabula colleagues, Alice Griffith, QMHS Team Lead, (2nd from left) and Peggy Senskey, Community Liaison, (center) both celebrated 15 years with Signature Health in 2021.

**We Lift Up One Another: More than 3,200 messages of kudos were shared among staff through a new recognition platform—in just two months!**

# Accreditations, Certifications & Affiliations



Accredited as a Federally Qualified Health Center (FQHC) by the Health Resources & Services Administration (HRSA)



Accredited by the Commission on Accreditation of Rehabilitation Facilities (CARF)



Certified as a Community Behavioral Health Center by Ohio Mental Health & Addiction Services (OhioMHAS)



A member of the National Association of Community Health Centers



A member of the Mental Health & Addiction Advocacy Coalition



At our signature community event, Trunk or Treat, Ashtabula families enjoyed collecting candy from spooky trunks, decorated by staff.

## Thank you to our 2021 grantors:



- Ashtabula County Department of Job and Family Services
- Cuyahoga County Board of Health
- Delta Dental Foundation
- Geauga County MHRS Board
- George Gund Foundation
- Greater Cleveland Food Bank
- HEALing Communities Study – Ohio
- Health Resources and Services Administration Bureau of Primary Health Care
- Lake County Department of Job and Family Services
- Lubrizon Foundation

- Ohio Association of Community Health Centers
- Ohio Attorney General's Office
- Ohio Department of Health Bureau of Infectious Diseases
- Ohio Department of Health Bureau of Maternal, Child, and Family Health
- Ohio Department of Mental Health and Addiction Services
- Ohio Emergency Management Agency
- Thatcher Family Fund of the Cleveland Foundation
- Three Arches Foundation
- United Way of Greater Cleveland
- Woodruff Foundation

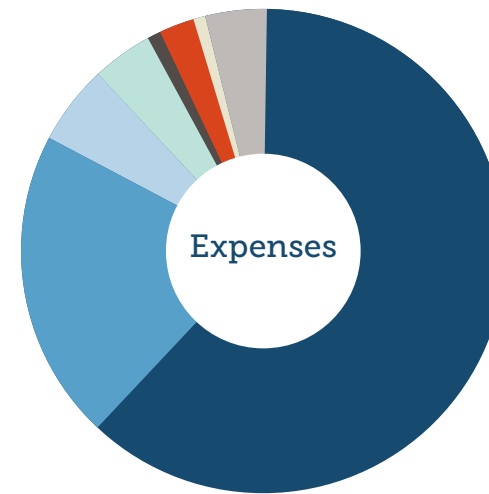
## Awards



# 2021 Financials

Total Net Revenue

**\$89 Million\***



### Expenses

Salaries & Benefits	61%
Medications	21%
Occupancy	5%
Software & Equipment	4%
Medical & Professional Fees	3%
Supplies	1%
Client Expenses	1%
Other Expenses	4%

Unaudited

\*Does not include one-time capital grant funding

## Signature Health Senior Leadership Team

**Jonathan Lee**  
President & CEO

**Christine Boulden**  
Chief Nursing Officer

**Indrani Egleston**  
Chief Financial Officer

**Trish Krewson, Esq**  
Chief Human Resources Officer / General Counsel

**Jared Lucas**  
Director of Information Technology

**Shannon Majoras, Esq**  
Chief Compliance Officer / General Counsel

**Ann Mason**  
Chief Operating Officer

**Libbie Stansifer, MD**  
Chief Medical Officer

### Medical Directors

**Sarah Hoehnen, DO**  
Medical Director, Infectious Disease

**Farah Munir, DO**  
Medical Director, Psychiatry

**Todd Wagner, MD**  
Medical Director, Primary Care

**Anna Whitmer, PMHNP**  
Medical Director, Addiction Services

## Signature Health Board of Directors

**Josephine Jones**  
Chairwoman

**Paul Brickman**  
Vice Chairman

**Charles Strawbridge**  
Treasurer

**Stephanie Malbasa, Esq.**  
Secretary

- Paula Anzlovar**
- Georgia Brickman**
- Heather Brissett**
- Mark Castell**
- Giovanni DiLalla**
- Kelly Farrell**
- Paul Fuller**
- Jennifer Sample**
- Earl Tucker**

Signature Health would like to recognize the generosity of Katherine Brown, Martha Clizbe, Henri Pell Junod, Jr., and Robert Scher. We also thank Sue Liston Kaufman and others who contributed in memory of Stanley Kaufman.

This organization is supported by the Health Resources and Services Administration (HRSA) of the U.S. Department of Health and Human Services (HHS) as part of an award totaling \$1,372,037 with 98.1% financed with non-governmental sources. The contents are those of the author(s) and do not necessarily represent the official views of, nor an endorsement by, HRSA, HHS, or the U.S. Government. For more information, please visit HRSA.gov.



# Locations & Services

## Ashtabula County

- 1 Ashtabula**  
4726 Main Ave.  
Ashtabula, OH 44004  
440-992-8552
- 2 Ashtabula - Sexual & Reproductive Health**  
510 W. 44th St. #2  
Ashtabula, OH 44004  
440-992-5953
- 🏠 Bridgeview Manor**  
4428 Collins Blvd.  
Ashtabula, OH 44004  
440-992-6600

For hours of operation, please visit [SignatureHealth.org](http://SignatureHealth.org).

\* Opening in 2022

## Cuyahoga County

- 3 Beachwood**  
24200 Chagrin Blvd.  
Beachwood, OH 44122  
216-831-6466
- 4 Lakewood**  
14701 Detroit Ave.  
Lakewood, OH 44107  
216-766-6080
- 5 Maple Heights**  
21100 Southgate Park Blvd.  
Maple Heights, OH 44137  
216-663-6100
- 🏠 ORCA House\***  
3001 Prospect Ave.  
Cleveland, OH 44115

## Lake County

- 6 Administrative Offices**  
7232 Justin Way  
Mentor, OH 44060  
440-578-8200
- 7 Painesville**  
NEW: 54 S. State St.  
Painesville, OH 44077  
440-853-1501
- 8 Willoughby**  
38882 Mentor Ave.  
Willoughby, OH 44094  
440-953-9999
- 🏠 Everett Clinic\***  
7621 Mentor Ave.  
Mentor, OH 44060

	Ashtabula	Beachwood	Lakewood	Maple Heights	Painesville	Willoughby
Service	1	3	4	5	7	8
Mental Health Care	📍	📍	📍	📍	📍	📍
Addiction Recovery	📍	📍	📍	📍	📍	📍
Medication-Assisted Treatment	📍		📍	📍		📍
Primary Care	📍	📍		📍	📍	📍
Infectious Disease Care	📍		📍	📍	📍	📍
On-site Pharmacy	📍	📍	📍	📍	Coming Soon	📍
On-site Lab	📍	📍	📍	📍	📍	📍
Walk-in Assessments	📍	📍	📍	📍	📍	📍



**Signature**  
HEALTH

When you need help now®

[SignatureHealth.org](http://SignatureHealth.org)